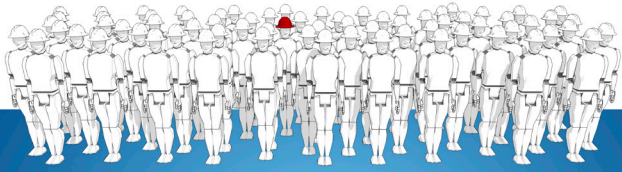


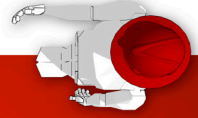
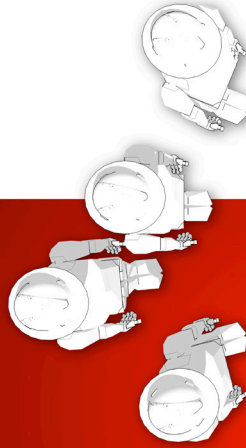
Qualification | Award



iLEAD
Programme



System



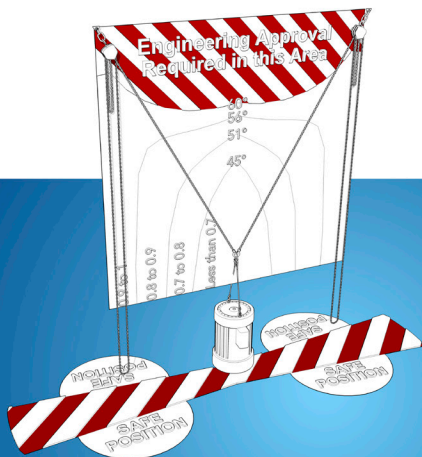
iLEAD
Programme



iLEAD

Identify | Learn | Experience | Assess | Develop

Level 2 Rigger (PIC)



iLEAD
Programme

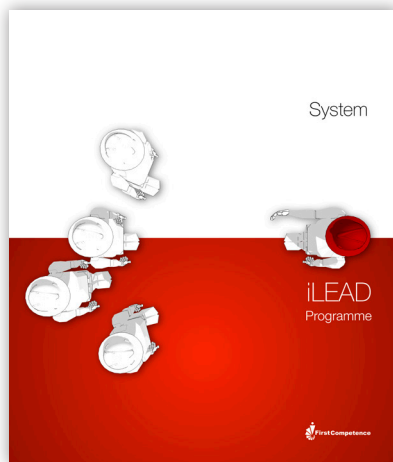


Level 3 Competent Person (CP)

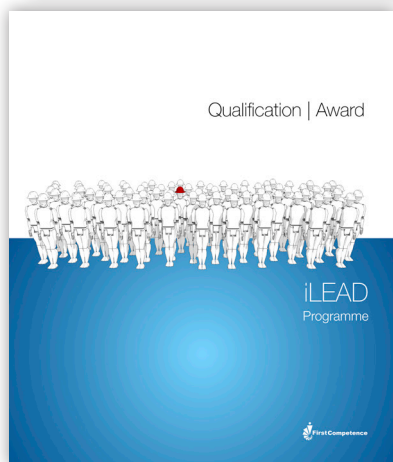


iLEAD
Programme





System procedures demonstrate that First Competence's iLEAD Programme has the management and quality assurance systems to support the delivery, assessment and internal verification of the qualifications.



Qualification | Award procedures demonstrate that First Competence's iLEAD Programme has the staff, reference materials, learning materials, assessment materials, equipment and accommodation needed to deliver, assess and internally verify the qualifications.



The iLEAD Programme is designed to initially assess the competence of each applicable delegate in their identified role, equipment type and level. Once completed, the result of the initial assessment identifies the requisite actions to be taken, if any, for example:

- A score of between 80% to 100% indicates the satisfactory completion of the applicable role / level assessment or validates current qualification. No further action is required unless the delegate / management wish to proceed to the next level
- A score of between 51% to 79% indicates further coaching experience is required. The delegate would then be required to complete the applicable role / level logbook, which is designed to structure and record experience. Once completed the delegate would then undergo further assessment to confirm they have achieved the appropriate level of competence for their role
- A score of between 0% and 50%, indicates further training and experience is required. Once completed the delegate would then undergo further assessment to confirm they have achieved the appropriate level of competence for their role.

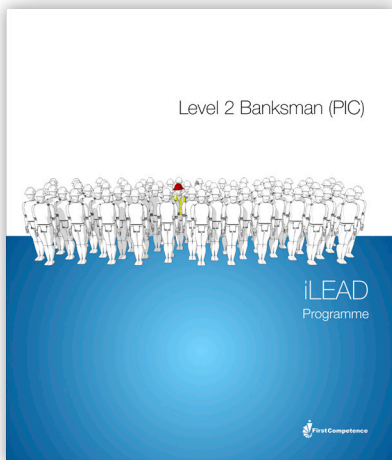




The initial assessment comprises questions and observation to assess knowledge and skill / ability.

Before starting the assessment the First Competence Instructor / Assessor shall confirm that the delegate has first read and understood the company lifting operations procedures.

Note | Level 2 and 3 initial assessments contain requirements to produce lift categorisations, plans and risk assessments.



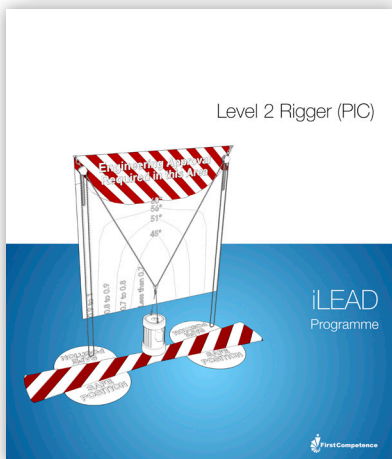
Acceptable assessment knowledge and performance criteria / guidance is based on / aligned with:

- Manufacturers' instructions
- Company procedural requirements
- Defined technical standards / industry guidance
- Training course material

Note | No certificate is issued following the initial assessment. It is only designed to identify if an individual possesses the applicable level of competence and any requisite development actions.

If development is required, the following tools are utilised:

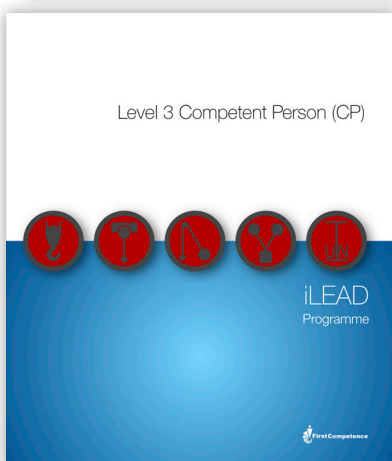
- Training Courses - slides to deliver the required level of knowledge, with questionnaires to assess information retention and understanding and observations to assess practiced skill / ability
- Logbooks - to structure and record experience



Note | The induction level is optional, and only used if the client requests a level of introductory training first.

Following the completion of any development training and / or a logbook, the delegate undertakes the level / final assessment.

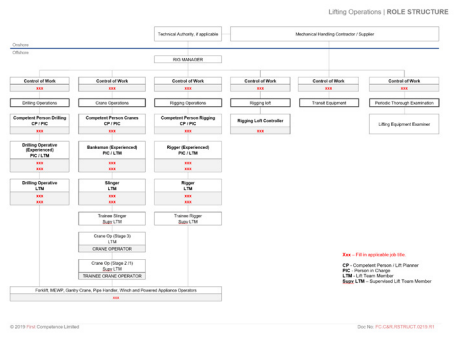
Delegates who successfully complete Level 1 Crane Operations and Level 1 Rigging Operations level / final assessments are issued with a First Competence Certificate of Competence.



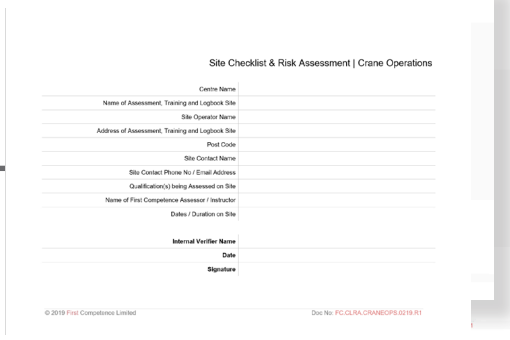
Delegates who successfully complete Level 2 Crane Operations, Level 2 Rigging Operations and or Level 3 Competent Person level / final assessments are issued with a Certificate of Competence.

Note | Delegates who successfully completed a training course are issued with a First Competence certificate of training.

iLEAD Process



1. Role Structure Organ-o-gram
Completed by client before mobilisation



2. Site Checklist and Risk Assessment Form
Completed by First Competence Instructor / Assessor



8. Issue Certificates
Issued after training and level / final assessments



7. Results and Progress Record
Completed after assessments, training and logbooks & to indicate progress

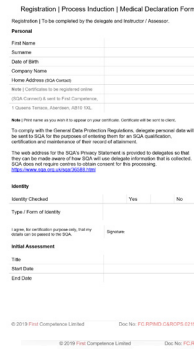


9. Update Online Results Database
Completed by First Competence Co-ordinator



10. Weekly Reports
Completed / issued by Instructor / Assessor

iLEAD Process



Registration | Process Induction | Medical Declaration Form
 Registering | To be completed by the delegate and instructor / Assessor

Personal

First Name: _____
 Surname: _____
 Date of Birth: _____
 Company Name: _____
 Home Address (PCA Contact): _____
 Email (Contactable on an ongoing basis): _____
 (PCA Contacted & used for First Competence): _____
 I Declare Terms, Conditions: (2019) Yes

Assessor

Assessor Name: _____
 Assessor Title: _____

Medical

Identify Checked: Yes No
 Type - Form of Identity: _____
 Issues for Certificate Indemnity, Not my Assessor or Delegate for the PCA: Yes/No
 Initial Assessment: _____
 Title: _____
 Start Date: _____
 End Date: _____

© 2019 First Competence Limited Doc No: FC-IPMD-CARDOPS-019-01
 © 2019 First Competence Limited Doc No: FC-IPMD-CARDOPS-019-01

3



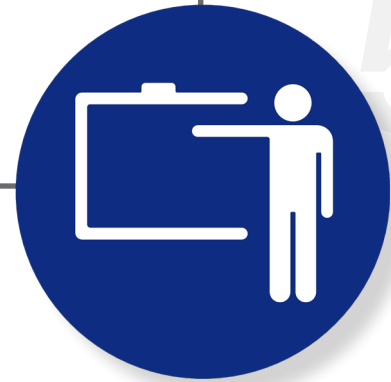
4

3. Registration, Induction & Medical Declaration Completed by Delegate & Instructor / Assessor

4. Initial Assessment



6. Level / Final Assessment, if required

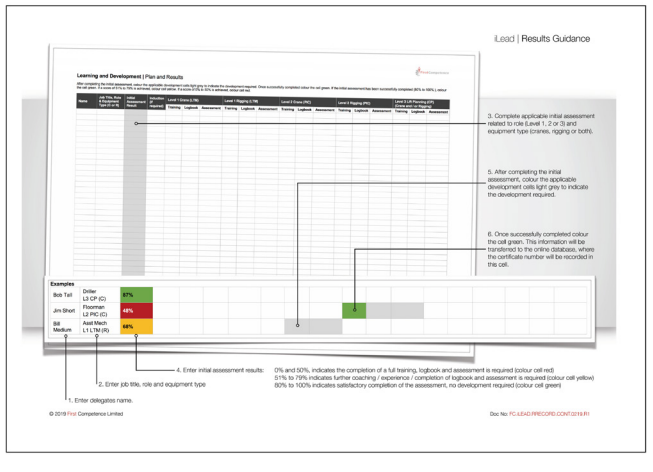


5. Development, if required Training Course and / or Logbook

Results and Progress Record

The First Competence Instructor / Assessor shall record the result from each initial assessment. Following this, the applicable development cells are coloured light grey to indicate the development required. Once development elements have been successfully completed the cell colour shall be changed to green.

Results records shall be sent to the First Competence Co-ordinator at the end of each week and upon trip completion. The First Competence Co-ordinator shall transfer this information to the online database every week the information is received. Once transferred, the applicable certificate will be generated (First Competence). The certificate and its number will then be uploaded to the online database.



Learn | Results Guidance

Learning and Development (Plan and Results)

Learning and Development (Plan and Results)	Level 1 (100%)	Level 2 (100%)	Level 3 (100%)	Level 4 (100%)	Level 5 (100%)	Level 6 (100%)	Level 7 (100%)	Level 8 (100%)	Level 9 (100%)	Level 10 (100%)
Example 1: Driver	100%	100%	100%	100%	100%	100%	100%	100%	100%	100%
Example 2: Driver	100%	100%	100%	100%	100%	100%	100%	100%	100%	100%
Example 3: Driver	100%	100%	100%	100%	100%	100%	100%	100%	100%	100%
Example 4: Driver	100%	100%	100%	100%	100%	100%	100%	100%	100%	100%

1. Enter delegate's name.
 2. Enter job title, role and equipment type.
 3. Complete applicable initial assessment (based to role Level 1, 2 or 3) and equipment type (exam, logging or both).
 4. After completing the initial assessment, colour the applicable development cells light grey to indicate the development required.
 5. Once successfully completed colour the cell green. This information will be transferred to the online database, where the certificate number will be recorded in the cell.
 6. Once successfully completed colour the cell green. This information will be transferred to the online database, where the certificate number will be recorded in the cell.

0% and 10% indicates the completion of a full training, logbook and assessment is required (colour cell red)
 20% to 90% indicates further coaching / experience / completion of logbook and assessment is required (colour cell yellow)
 90% to 100% indicates satisfactory completion of the assessment, no development required (colour cell green)

© 2019 First Competence Limited Doc No: FC-LEAD-REC-CARDOPS-019-01

iLEAD Unit Summaries

Unit 1, Perform Slinger / Load Handler (LTM) Duties during Crane & Winch Operations, Level 1

This unit is relevant to any delegate employed or interested in the duties of a Slinger / Load Handler (LTM) during crane and winch operations. Delegates who achieve this unit should have the knowledge and ability to:

- Comply with crane operation safe systems of work
- Comply with rigging loft management controls and correctly withdraw and return lifting equipment, from and to a rigging loft
- Correctly inspect and safely use the types of lifting equipment defined in the performance criteria
- Perform the duties of the Slinger / Load Handler (LTM) during the types of crane and winch operations defined in the performance criteria
- Safely use load handling tools and comply with work safe practices defined in the performance criteria
- Comply with controls required to produce safe cargo handling, manual handling and working at height operations and to reduce the risk of dropped objects

Unit 2, Perform Rigger (LTM) Duties during Rigging Operations, Level 1

This unit is relevant to any delegate employed or interested in the duties of a Rigger (LTM) during rigging operations. Delegate who achieve this unit should have the knowledge and ability to:

- Comply with rigging operation safe systems of work
- Comply with rigging loft management controls and correctly withdraw and return lifting equipment, from and to a rigging loft
- Correctly inspect and safely use the types of lifting equipment defined in the performance criteria
- Perform the duties of the Rigger (LTM) during the types of rigging operations defined in the performance criteria
- Safely use load handling tools and comply with work safe practices defined in the performance criteria
- Comply with controls required to produce safe cargo handling, manual handling and working at height operations and to reduce the risk of dropped objects

Unit 3, Perform Banksman (PIC) Duties during Crane & Winch Operations, Level 2

This unit is relevant to any delegate employed or interested in the duties of a Banksman (PIC) during crane and winch operations. Delegates who achieve this unit should have the knowledge and ability to:

- Perform the duties of a Banksman (PIC)
- Implement and comply with crane operation safe systems of work
- Implement and comply with rigging loft management controls and correctly withdraw and return lifting equipment, from and to a rigging loft
- Utilise mathematics and unit conversion defined in the performance criteria
- Correctly inspect and ensure the safe use of the types of lifting equipment defined in the performance criteria
- Perform the duties of the Banksman (PIC) during the types of crane / winch operations defined in the performance criteria
- Perform supporting work activities, defined in the performance criteria, during crane / winch operations in the Banksman (PIC) role

Unit 4, Perform Rigger (PIC) Duties during Rigging Operations, Level 2

This unit is relevant to any delegate employed or interested in the duties of a Rigger (PIC) during rigging operations. Delegates who achieve this unit should have the knowledge and ability to:

- Perform the duties of a Rigger (PIC)
- Implement and comply with rigging operation safe systems of work
- Implement and comply with rigging loft management controls and correctly withdraw and return lifting equipment, from and to a rigging loft
- Utilise mathematics and unit conversion defined in the performance criteria
- Correctly inspect and ensure the safe use of the types of lifting equipment defined in the performance criteria
- Perform the duties of the Rigger (PIC) during the types of rigging operations defined in the performance criteria
- Perform supporting work activities, defined in the performance criteria, during rigging operations in the Rigger (PIC) role

Unit 5, Perform Competent Person (CP) Duties for Crane & Rigging Operations, Level 3

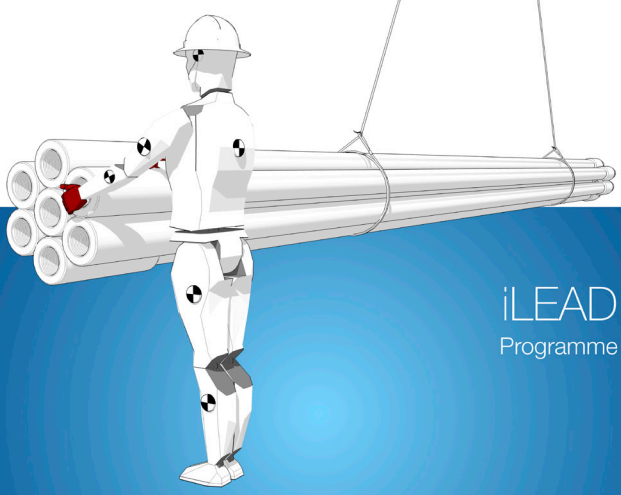
This unit is relevant to any delegate employed or interested in the duties of a Competent Person (CP) during crane and rigging operations. Delegates who achieve this unit should have the knowledge and ability to:

- Perform the duties of a Banksman (PIC), Rigger (PIC) and Competent Person
- Implement, manage and comply with lifting operation safe systems of work
- Describe initial and periodic lifting equipment certification requirements
- Implement and comply with lifting equipment control and maintenance criteria
- Utilise mathematics defined in the performance criteria
- Categorise, plan and risk assess crane and rigging lifting operations


Get in touch

Paul Thomson
Managing Director
info@firstcompetence.co.uk
T: +44 (0) 1224 333 212

Level 1 Slinger (LTM)



iLEAD Programme



Induction



iLEAD Programme




www.firstcompetence.co.uk
 info@firstcompetence.co.uk
 +44 (0) 1224 333 212
 1 Queens Terrace, Aberdeen, AB10 1XL

Level 1 Rigger (LTM)



PUSH iLEAD Programme



Qualification | Award



iLEAD Programme

